



Bartels AutoEngineer®

Version 7.0

Highlights

This document contains illustrated information about some of the new features introduced with **Bartels AutoEngineer Version 7.0**.

Bartels AutoEngineer Version 7.0 Highlights

Published by: Bartels System GmbH, Erding

Last printing: November 2007

The information contained in the **Bartels AutoEngineer** publications as well as the products and/or programs described therein are subject to change without notice and should not be construed as a commitment by Bartels System.

Although Bartels System has gone to great effort to verify the integrity of the information provided with the **Bartels AutoEngineer** publications, these publications could contain technical inaccuracies or typographical errors. Bartels System shall not be liable for errors contained therein or for incidental consequential damages in connection with the furnishing, performance or use of this material. Bartels System appreciates readers' and/or users' comments in order to improve these publications and/or the products described therein. Changes are periodically made to the information therein. These changes will be incorporated in new editions of the **Bartels AutoEngineer** publications.

All rights reserved. No part of the **Bartels AutoEngineer** publications may be reproduced, stored in a retrieval system, translated, transcribed or transmitted, in any form or by any means manual, electric, electronic, electromagnetic, mechanical, chemical, optical or otherwise without prior express written permission from Bartels System.

Bartels AutoEngineer®, **Bartels Router®** and **Bartels Autorouter®** are registered trademarks of Bartels System.

Bartels User Language™ and **Bartels Neural Router™** are trademarks of Bartels System. All other products or services mentioned in this publication are identified by the trademarks or service marks of their respective companies or organizations.

Copyright © 1986-2007 by Oliver Bartels F+E

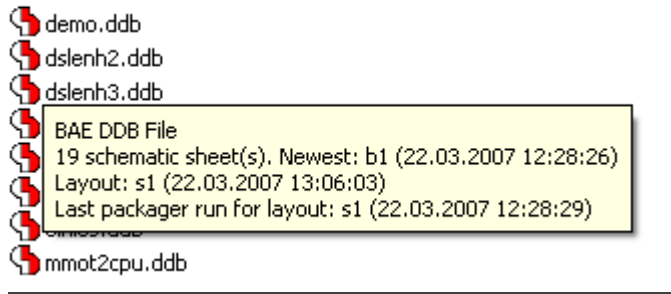
All Rights Reserved

Printed in Germany

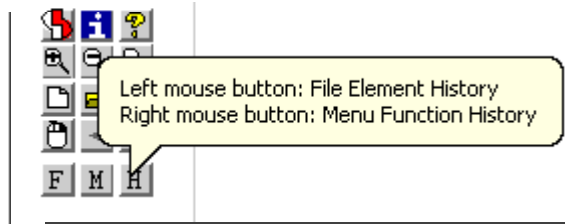
Contents

Bartels AutoEngineer® Version 7.0 Highlights	1
Bartels AutoEngineer Tooltips (Windows)	4
Schematic Editor - Symbol Logic Editor Dialog for Alternative Package Type Assignments	5
Layout Editor Polygon Combination	6
Layout Editor Thermal Stencil Pad Generation	6
Layout Editor Net Assistant.....	7
Layout Editor Trace Beautifier	7
Layout Editor Trace Length Adjustment	8
Parallel Trace Signal Phase	8

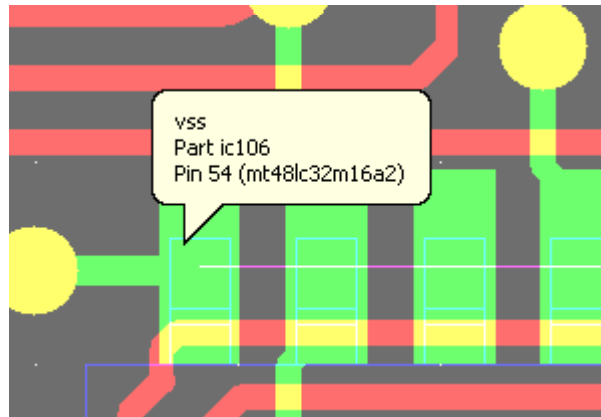
Bartels AutoEngineer Tooltips (Windows)



File Contents Info during File Selection

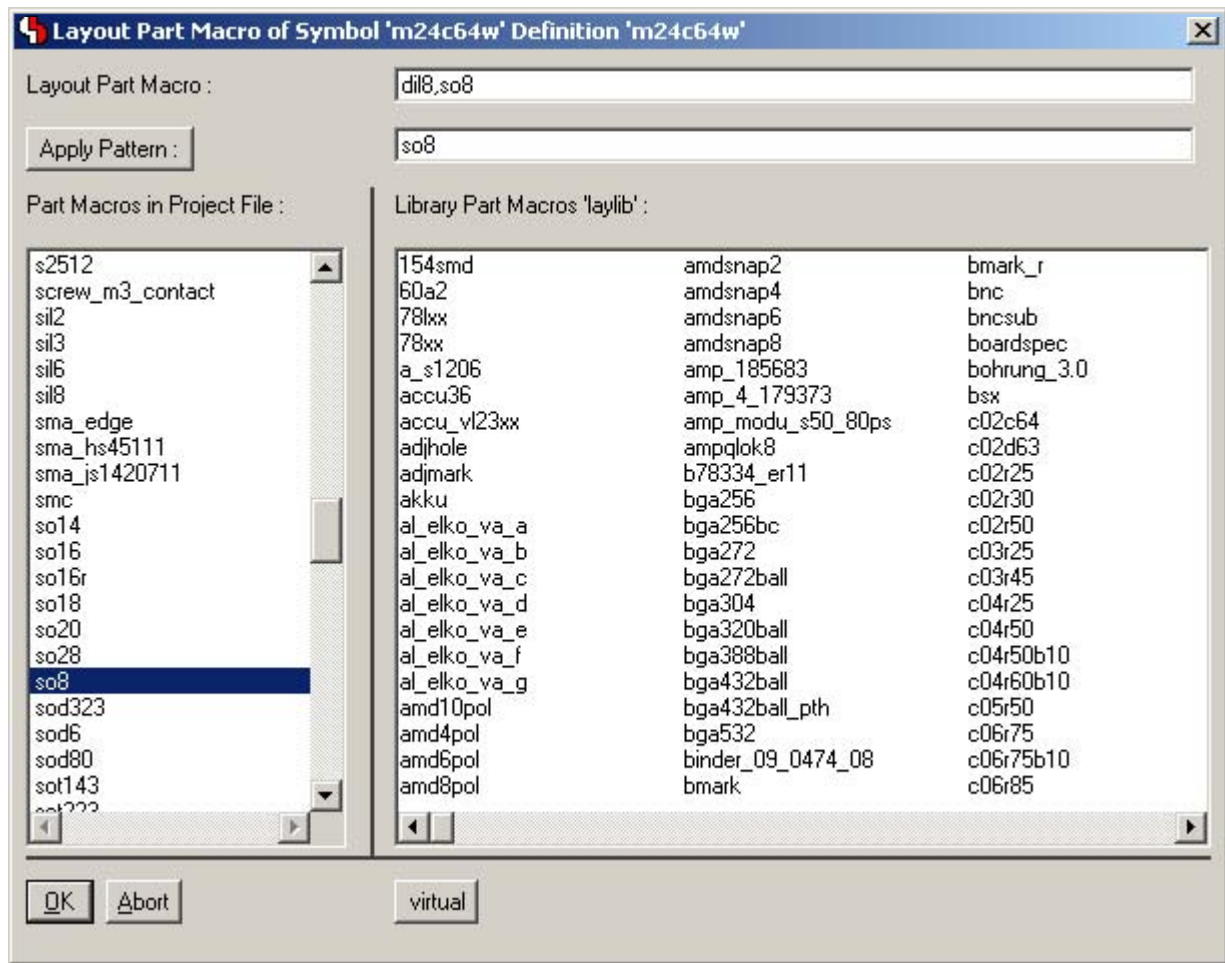


Toolbar Function Tooltips

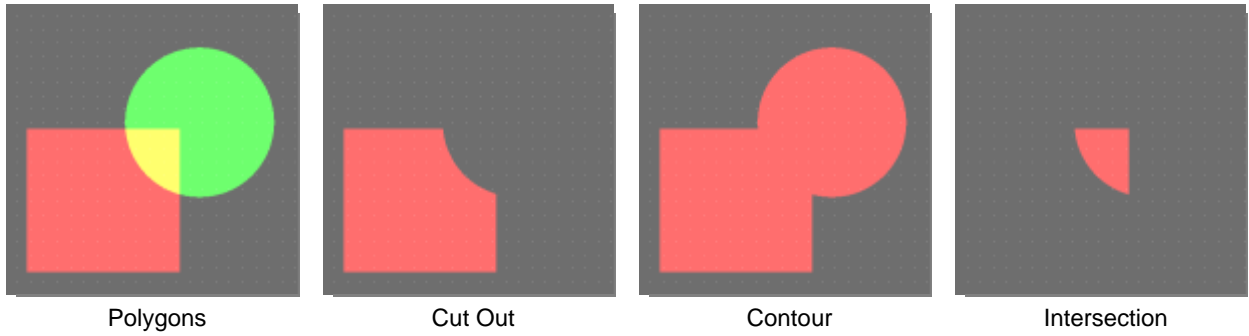


Element Info (optional)

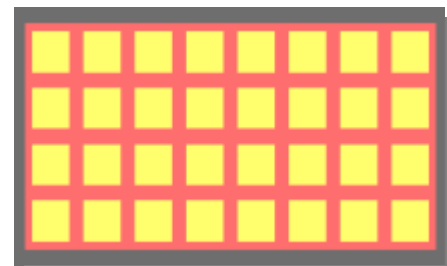
Schematic Editor - Symbol Logic Editor Dialog for Alternative Package Type Assignments



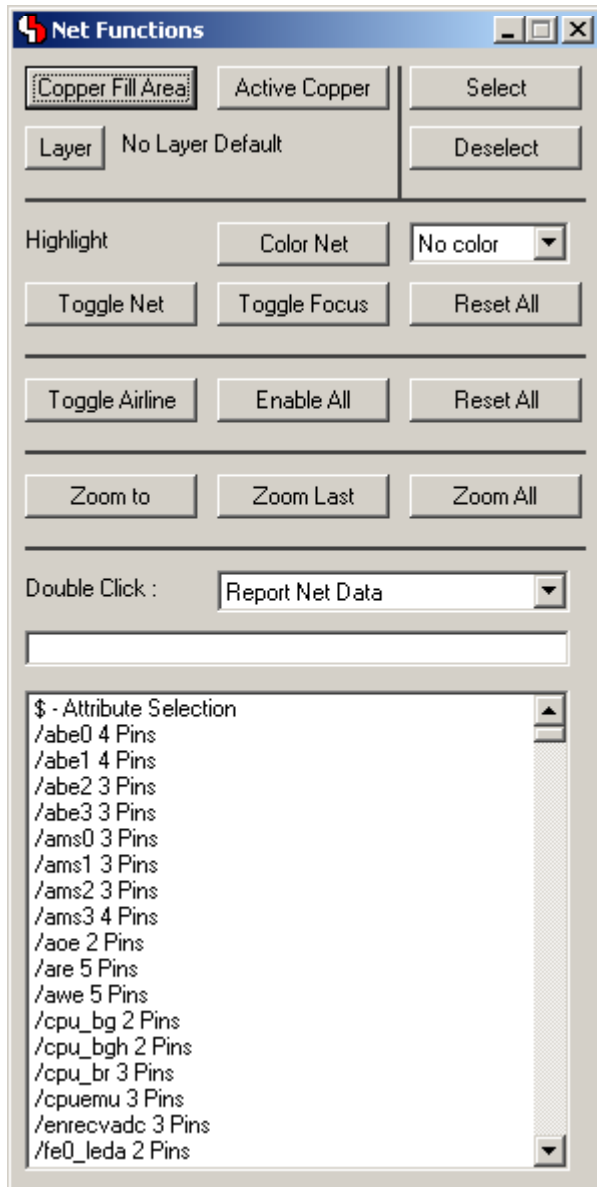
Layout Editor Polygon Combination



Layout Editor Thermal Stencil Pad Generation

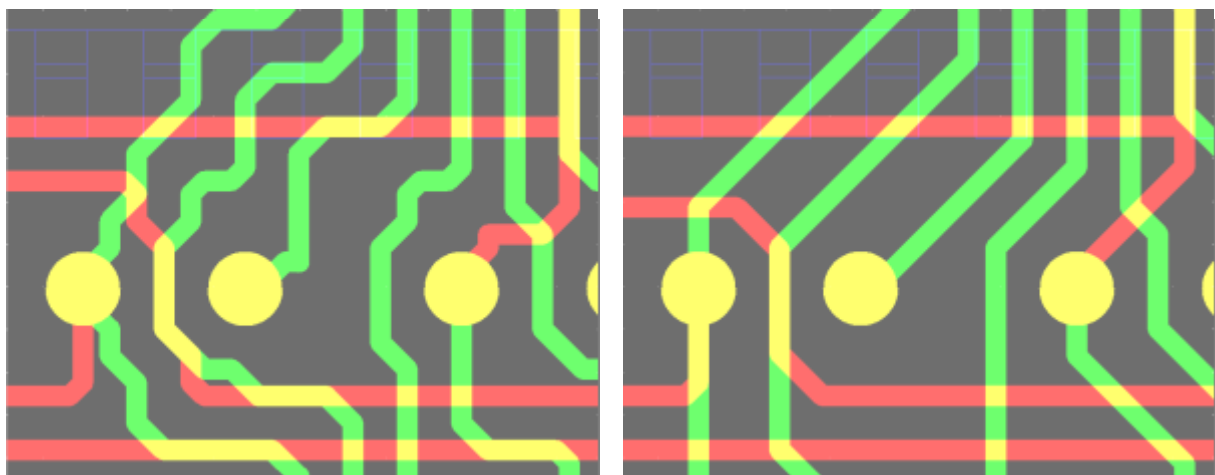


Layout Editor Net Assistant

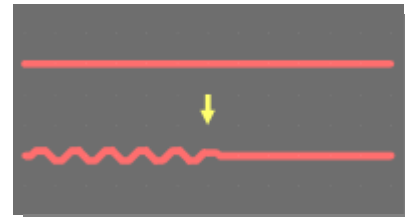
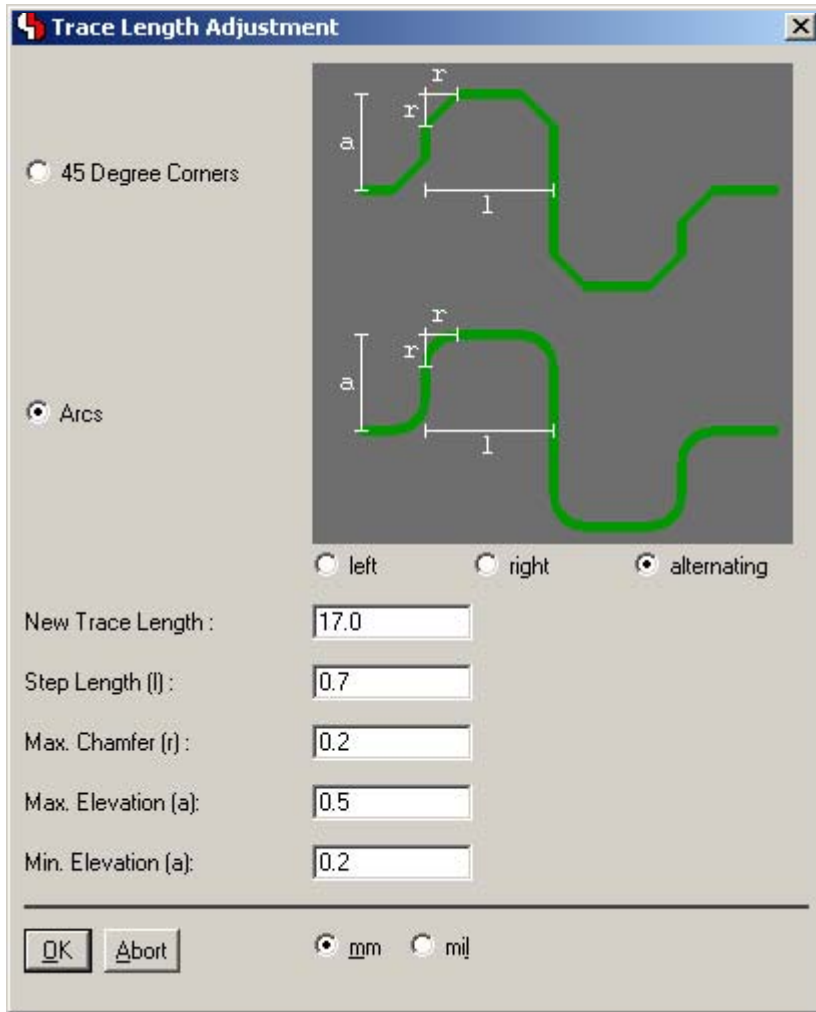


Modeless Layout Editor dialog with net-specific functions.

Layout Editor Trace Beautifier



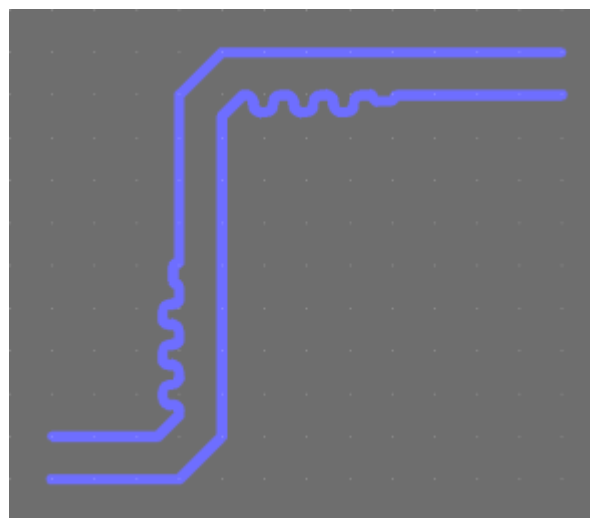
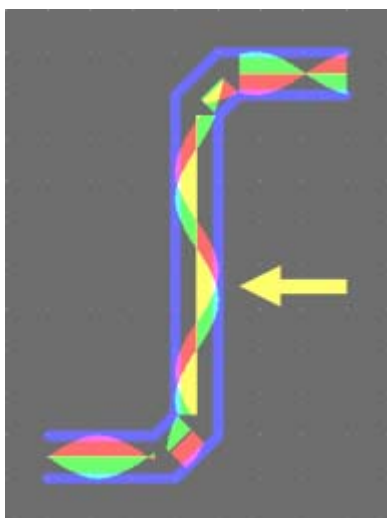
Layout Editor Trace Length Adjustment



Parallel Trace Signal Phase

Signal Phase Shift Display

Phase Shift Compensation through Trace Length Adjustment



Please see the **Bartels AutoEngineer® Version 7.0 Release Notes** for a detailed description of all new features introduced with **Bartels AutoEngineer Version 7.0** features.